



# BUFFALO STATE

The State University of New York

[www.buffalostate.edu](http://www.buffalostate.edu)



# Graduate Programs

Public Administration &  
Nonprofit Management

Located in the Department of Economics,  
Finance & Public Administration

# Nonprofit & Government

- These sectors work closely together
- A large amount of funding for many nonprofits are provided by and monitored by government agencies
- Fluid movement among professionals between nonprofits and government agencies. We have seen this career pattern with our own MPA alumni.
- Both sectors share the need to evaluate performance on measures other than monetary profits.
- Public and nonprofit administrators share an ethos of “public service motivation.”

# Role of Nonprofit Organizations in NYS

- Vast majority are 501 (c) (3) - a corporation that has been given tax-exempt status by the IRS to further a religious, scientific, charitable, educational, literary, public safety or cruelty-prevention mission.
- Many (c) 4, 5 & 6 as well (civic leagues, labor unions, chambers of commerce)
- Approx 14,000 nonprofits in NYS
- 2<sup>nd</sup> largest workforce in NYS
- NYS has the 2<sup>nd</sup> largest number of nonprofits in the country (33,700) and the largest employment with 1.4 million jobs (2017).
- Over 3,000 nonprofits in Erie County, with revenues of \$3.2 billion for WNY's 311 largest nonprofits.
- Erie County nonprofits - employment of 64,336, 16.2% of private employment, \$41,830 (average annual wage).

# Meet Your MPA TEAM

## MPA Faculty Committee

- Laurie Buonanno, Ph.D., M.B.A – Professor, MPA Coordinator
- Suparna Soni, Ph.D., M.P.A., M.S.W. – Associate Professor
- Atta A Ceesay, Ph.D., M.B.A.- Associate Dean/ Associate Professor
- Ikhee Cho, Ph.D., M.P.A.- Assistant Professor
- Frederick Floss, Ph.D.- Professor
- Joelle Leclaire, Ph.D. – Professor
- The Honorable Byron Brown, M.S. – Professor of Practice

# MPA Mission Statement

The SUNY Buffalo State Public Administration and Nonprofit Management MPA Program prepares a diverse body of pre-service and in-service professionals for positions of leadership in local, national, and international public and nonprofit service. The program cultivates values of accountability, ethics, and social equity through learning, service projects, and research. The program contributes to the body of knowledge and advances the quality of governance.

# Admission Requirements

- Bachelor's degree
- Minimum 3.0
- A resume
- Two letters of reference
- Letter of Intent (approx. 250 words)
  - Why you would like to pursue an MPA
  - Training & job experience
  - Educational objectives
  - Background in statistics and/or research methods
  - Future career goals



# Curriculum



# Master of Public Administration & Nonprofit Management

- 36 credit hours
- Core (21 hours)
  - Intro to public administration & policy, budgeting, human resource management, public organizations, strategic planning, research methods, data analysis
- Tracks (12 hours)
  - Public Administration
  - Nonprofit Management
  - International Public Management
- Master's project (3 hours)

# Advanced (Graduate) Certificate Programs

## Public Management (online or in-person)

- 15 credit hours
- All credits apply to the MPA program

## Disaster and Emergency Management (online)

- 15 credit hours
- All credits apply to the MPA program

# Sample electives

- Nonprofit Grants Management & Funds Development
- Introduction To Disaster & Emergency Management
- Cost/Benefit Analysis
- Econometrics
- Labor Economics
- Public Finance
- NYS Govt & Budget
- U.S. Public Policy
- NGO Management & International Development
- Nonprofit Mgmt. & Governance
- City & County Mgmt.
- Immigration & Refugee Policy
- Human Rights & Humanitarian Policy
- Leadership In Public & Nonprofit Organization
- Administrative Ethics
- Program Evaluation
- The Nonprofit & Voluntary Sector
- Comparative Public Administration & Policy
- Independent Study (One-on-one With Faculty Mentor)
- Internship

# Classes

- Small class size - maximum 20, average 5-10 (approx. 30 students matriculated in the MPA program)
- 1 on 1 supervision for MPA project
- Data analysis (statistics) - hands-on class project for a public or nonprofit agency, produce a technical report
- All in-person classes scheduled no earlier than 4:30 p.m. Mon-Thurs. Saturday classes. Most classes are hybrid with online courses available as well.

- Diverse student body (pre-service, in-service, demographics)
- NASPAA accreditation of the MPA in process - we will be informed in July 2025.
- Integration of economics, finance, business, and public administration (new Department of Business, Economics, and Public Administration will be established in summer 2025).
- Networking with classmates, most of whom are working professionals in the public & nonprofit sectors

The background of the slide features a large, faint, orange-toned crest of Buffalo State University. The crest is shield-shaped and contains a central illustration of a building with a clock tower. The shield is flanked by two olive branches. Below the shield is a banner with the text "DEDICATED TO EXCELLENCE". The year "1871" is inscribed on the shield, just above the banner.

# Capstone Experience

MPA Project

# Project

- Prepares students to undertake research at a public or nonprofit agency.
- Provides students with a solo-authored project to share with potential employers and/or for career advancement within their current agencies.
- MPA Projects mentored by a faculty member.
- The MPA student demonstrates proficiency of the literature, research methods, quantitative/qualitative/mixed methods, sampling, data analysis & discussion, ethics in research using human subjects, professional report writing.
- Wide variety: needs assessments, strategic plans, policy analyses, program evaluations, handbooks, client satisfaction, compliance studies
- Can lead to publication in peer-reviewed journals - several students have published journal articles from their MPA projects

# MPA Projects - A sampling of project titles

- Attitudes of Erie County Child Protective Services Staff in a Post-Crisis Environment
- Police Officers' Perceptions of Body-worn Cameras: Comparison of Buffalo and Rochester Police Departments
- New York State Compliance with the 2016 Revision of the *Indian Child Welfare Act*
- Comparing Team and Case-based Approaches for Administering SNAP in NYS Counties
- Insurance Services Office (ISO) and the City of Niagara Falls
- Go & Dine - Evaluation of Pilot Program in Albany and Erie Counties



# MPA Projects - Continued....

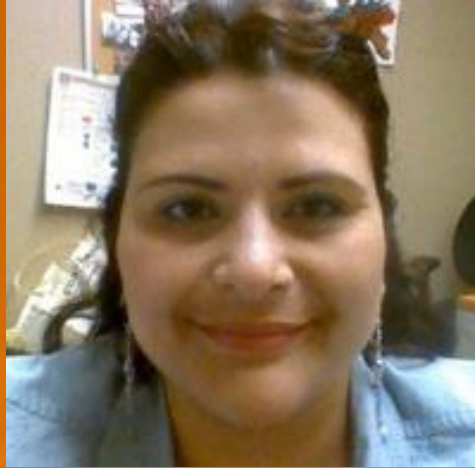
- Buffalo Block Club Operational Manual
- New Public Service Principles and Attitude Prevalence in Town Governmental Elected Officials and Civil Servants in Grand Island, NY
- Understanding COVID-19 Eviction Moratorium Impacts on Landlords in Buffalo and Cheektowaga
- Strategic Plan for Justice for Migrant Families, 501 (c) 3
- Impact of Navigation Programs in Cancer Screening Rates at Jordan Health, Rochester, NY
- Hispanic Heritage Culture Institute Strategic Plan

The image features a large, faint, orange-toned crest of Buffalo State University in the background. The crest is shield-shaped and contains a detailed illustration of a building with a clock tower. The building has a clock face on its tower and a flag at its base. The shield is flanked by two laurel branches. Below the shield is a banner with the text "DEDICATED TO EXCELLENCE". The year "1871" is inscribed on the shield, just above the banner.

# ALUMNI

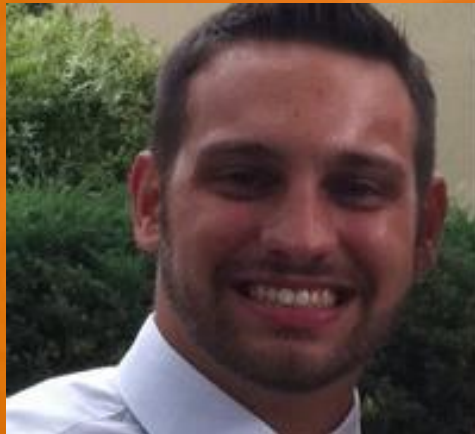
Raymond Wagner -  
MPA 2020  
being sworn in as  
Commissioner of Parking  
Services, City of Buffalo  
August 2022





Police  
Commissioner (ret)  
Joseph A.  
Gramaglia

Mo Sumbundu  
Assistant Director  
at Empire State  
Development



Ryan Gadzo,  
Project  
Administrator

Esmeralda Sierra,  
President at  
Hispanic Heritage  
Council



Jorden Then (U.S.  
Custom & Border  
Protection - Mid-  
Atlantic Field Mgr)

Kelly Craig  
(Executive  
Director, Pride  
Center)



## Buffalo State MPA Alumni Worksites (Government)

- Municipalities (Buffalo, Rochester, NYC)
- Counties (Erie, Monroe, Niagara)
- School districts
- State of New York - many agencies including Department of Environmental Conservation, Parks & Recreation, DOT, State Ed, New York Power Authority. Department of Health, NYS Courts, OPWDD, OMH, SUNY
- Federal Government (IRS, HUD, State Department, Veterans Administration, Social Security Administration, General Services Administration, USCIS, CBP)
- Roswell Park Cancer Institute

# Buffalo State MPA Alumni Worksites (Nonprofit/Philanthropy) - examples

- University foundations
- Southwest Key
- Pride Center of WNY, Executive Director
- Catholic Charities
- Private colleges & universities
- Health care agencies
- Migrant support organizations
- Veterans support organizations
- Centro Culturale Italiano (CCI)

The background of the slide features a large, faint, orange-toned crest of Buffalo State University. The crest is shield-shaped and contains a central illustration of a building with a clock tower. The building has a clock face on its tower and a flag at its base. The shield is flanked by two laurel branches. Below the shield is a banner with the text "DEDICATED TO EXCELLENCE". Above the building, within the shield, is the year "1871".

# Beyond the Classroom

# Buffalo-Niagara Chapter - American Society for Public Administration

- There are only two chapters in NYS - Buffalo (Western New York Chapter) and Greater NYC. Buffalo State faculty and alumni are very involved in ASPA, including as board members and officers.
- MPA students are invited to all ASPA events without membership requirement. Student discount available for ASPA membership.
- Networking events, annual dinner, journal club
- Opportunity to attend annual ASPA National Conference & also present research



- Graduate Student Association (campus-wide)-grants available for conference participation
- SUNY Model European Union
  - Serve as student directors
  - Play the European Commission (Eurocrats)
- American Society for Public Administration
  - Buffalo-Niagara Chapter (great networking opportunity, several board members BSC MPA graduates)
- Public Service Lecture Series
- MPA Advisory Board - guest lectures, networking
- Pi Alpha Alpha - the Global Honors Society for Public Affairs & Public Administration

# Internships, Fellowships, Scholarships, Career Support

- For Pre-Service Students: Internships Interns placed in nonprofit/local, county, state offices
- Excelsior Fellowship
- NYS Assembly
- Graduate assistantships
- SUNY Diversity tuition waiver
- Keith Henderson Scholarship
- Career & Professional Education Center

The background of the slide features a large, faint, orange-toned crest of Buffalo State University. The crest is shield-shaped and contains a detailed illustration of a building with a clock tower and a steeple. The shield is flanked by two olive branches. Below the shield is a banner with the text "DEDICATED TO EXCELLENCE" and the year "1871" centered above it.

# Tuition and Fees

# Graduate Tuition

*Visit Student Accounts Office at:*

<https://studentaccounts.buffalostate.edu/tuition-and-fees>

- **Residential (New York State) Tuition Rates FALL 2024/SPRING 2025:** .
- **Full-Time Student (12 or more credit hours)**
- Tuition per semester **\$5,655.00**
- Mandatory fees per semester **\$449.00**
- **Part-Time Student (1-11 credit hours)**
- Tuition per credit hour **\$471.00**
- Mandatory fees per credit hour **\$37.10**

# Prior Learning Credit



# Prior Learning Credit

- The MPA Committee will consider Prior Learning Credit (PLC) for both the MPA and the Graduate Certificate in Public Management.
- **What is Prior Learning Credit?**  
Credit for Prior Learning (CLP) is a set of well-established, researched, and validated methods for assessing non-collegiate learning for college credit. (cael.org).
- **What is the PLC policy at SUNY Buffalo State University?**  
See "[Alternative Methods of Earning Credit](#)."
- **How many graduate credit hours can I earn through the course challenge process?**  
A student may not receive more than 6 graduate credits through course challenge. This is a Buffalo State policy.
- **What are the qualifications for course challenges in the MPA and Graduate Certificate in Public Management programs?**  
A minimum of five years experience in managerial/program coordinator positions in a nonprofit, public, or business entity.
- **Can I challenge any MPA graduate course?**  
No. We do not accept course challenges for PAD 680, PAD 681, and PAD 690.
- **When can I challenge a course?**  
Once you are matriculated at Buffalo State.
- **What process do the MPA and Graduate Certificate in Public Management utilize for Prior Learning Assessment?**  
We use the portfolio assessment method supplemented by oral interview.

# Location





# An Urban-Engaged Campus





- Located in the City of Buffalo's Museum District & Elmwood Village
- Minutes from City Hall, County Hall, federal and state offices, federal and state courts
- Public transportation - Elmwood Ave is on a major bus line.
- MPA program remains engaged with City of Buffalo and Erie County through alumni, MPA projects, current students, and the MPA Advisory Board.



Students being briefed by City of Buffalo Common Council President, Chris Scanlon (now acting mayor)

The background of the slide features a large, faint watermark of the Buffalo State University logo. The logo is a shield-shaped crest. Inside the shield, there is a stylized sun or gear-like symbol at the top, a flag with horizontal stripes in the middle, and the year '1871' at the bottom. Below the shield is a banner that reads 'DEDICATED TO EXCELLENCE'. The entire watermark is rendered in a light orange color that matches the slide's background.

# Questions ?

Email us at:

[publicadministration@buffalostate.edu](mailto:publicadministration@buffalostate.edu)